

Phase Sequence Indicators & Selector Switches

Series AN and Series H

APPLICATION

To provide indication of incorrect phase rotation.



Series AN...
(Formerly Series RQ...SEL)

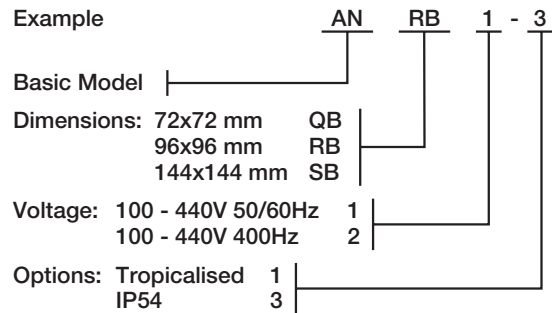
Bezel Size (mm)	Body Size (mm)	Square Cut-out (mm)
72 x 72	66.5 x 66.5	68 ^{0±0.7}
96 x 96	91 x 91	92 ^{0±0.8}
144 x 144	137 x 137	138 ^{0±1.0}

Full Dimensions/Cut-out see page 23.

DESCRIPTION

The instrument receives voltage inputs from each of the three phases. If all three phase voltages are present the three R-S-T LED's are illuminated. Correct/incorrect phase rotation is also indicated by the illumination of a further two LED's labelled CORRECT/INCORRECT.

MODEL REFERENCE



Note : Input Burden 3VA.

Panel Selector Switches

APPLICATION

To switch between phases for measurement purposes.

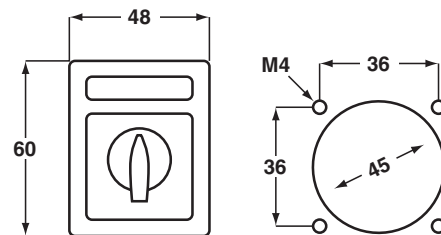


Series -H

DESCRIPTION

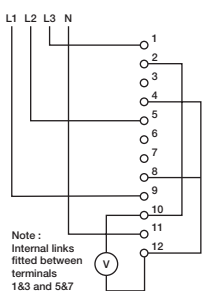
A family of rotary selector switches for switching between voltage or current phases into a single measuring instrument. All switches comply with BS4794, VDE0660, IEC408 and VL508.

Mode	Positions
YH2/2	Voltage OFF, L1-L2, L2-L3, L3-L1
YH5/3	Voltage L1-L2, L2-L3, L3-L1, OFF, L1-N, L2-N, L3-N
LH3/3	Current L1, L2, L3, OFF

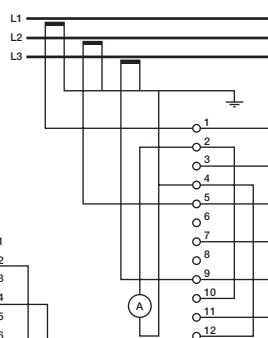


CONNECTION

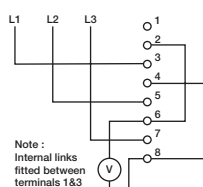
YH5/3



LH3/3



YH2/2



SPECIFICATION

Bezel size	48 x 60mm
Voltage Rating	660V ac
Current Rating	20A continuous
Contacts	Silver/Silver alloy
Life Expectancy	1 million operations
Operating Temperature	-20 to +60°C

Information Required With Order

- Model
- Example: Voltmeter Selector Switch Type YH5/3

DATA SHEET RI01085