

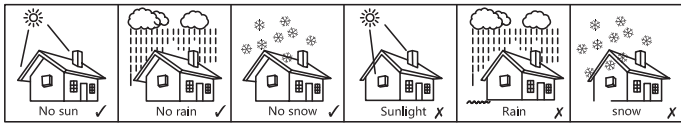
RI-ENERGYFLOW-3P-SERIES-15

Quick Start Installation Guide

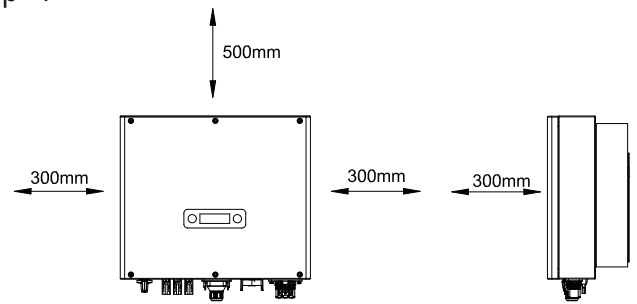
RI-ENERGYFLOW



- When the ambient temperature is lower than 45°C, the inverter can achieve the best operating state.
- Installation height is preferably parallel to the line of sight for ease of operation and maintenance.
- Inverters should be installed away from flammable and explosive items and ensure that there is no strong electromagnetic interference equipment around them.
- The parameters labels and warning signs of the inverter must be clearly visible after installation.
- Avoid sun, rain and snow when installing inverters.



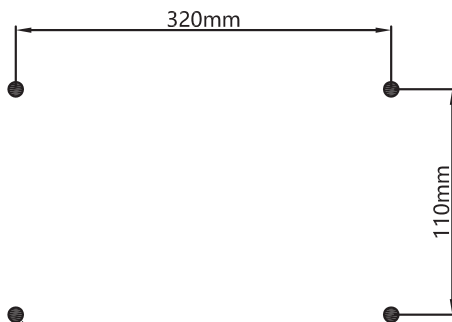
step 1



Installation spacing

If the machine is installed indoors, it can greatly extend the service life of the machine.

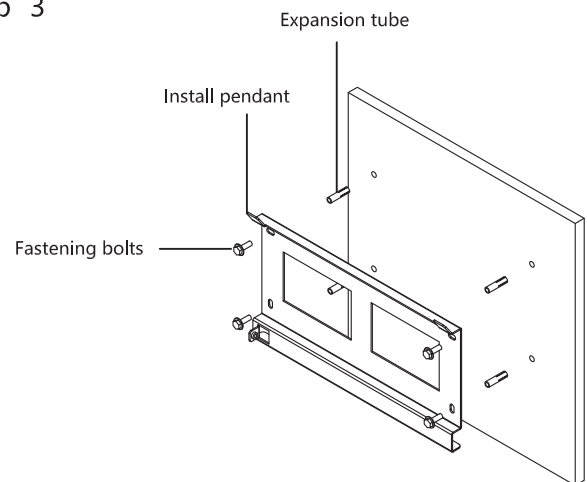
step 2



Size of borehole

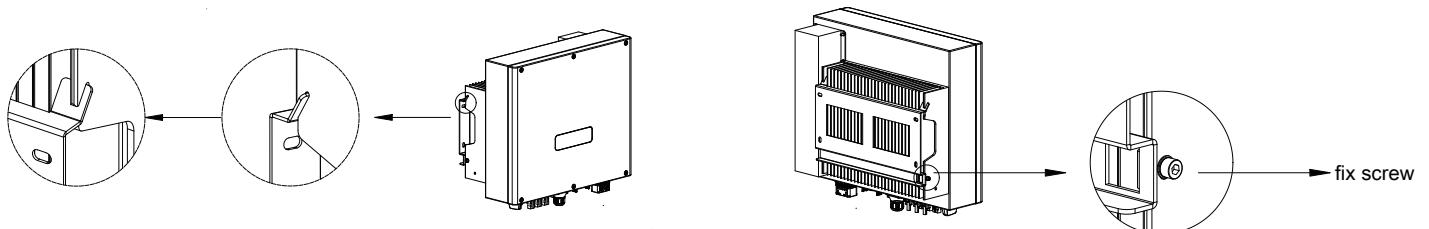
4-φ8 Holes Depth

step 3



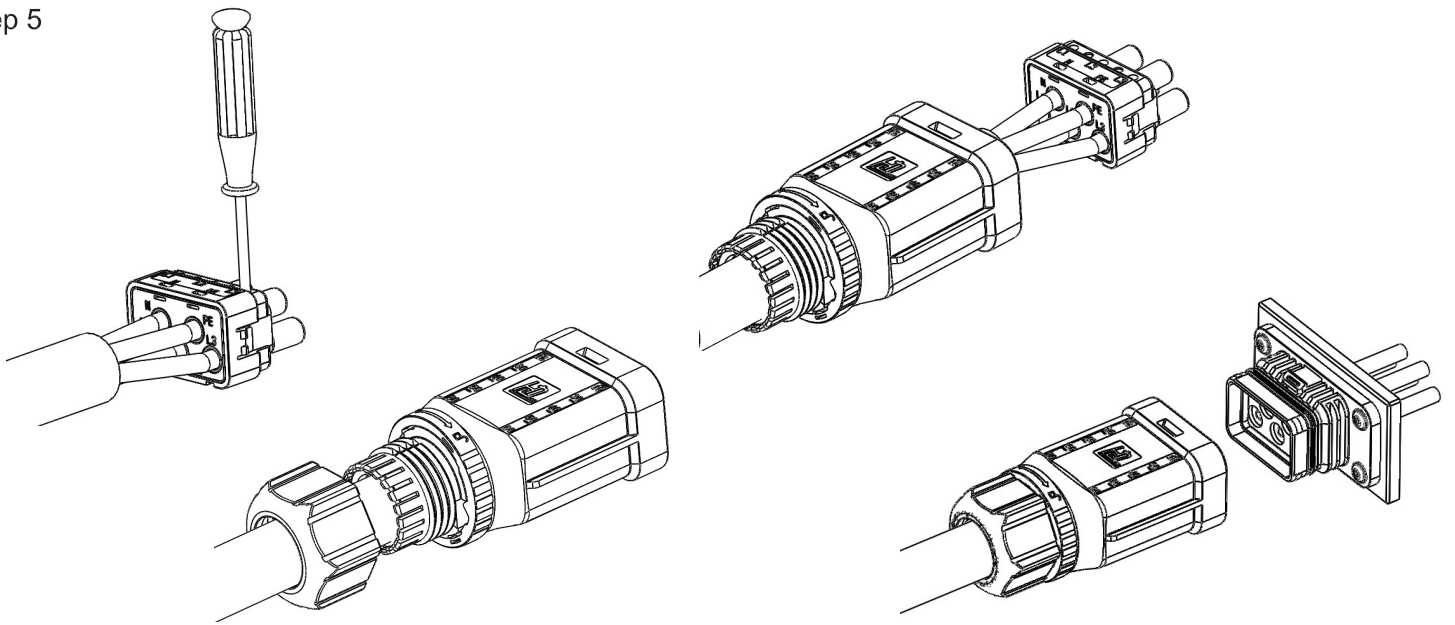
Hanging board installation

step 4



Machine Installation

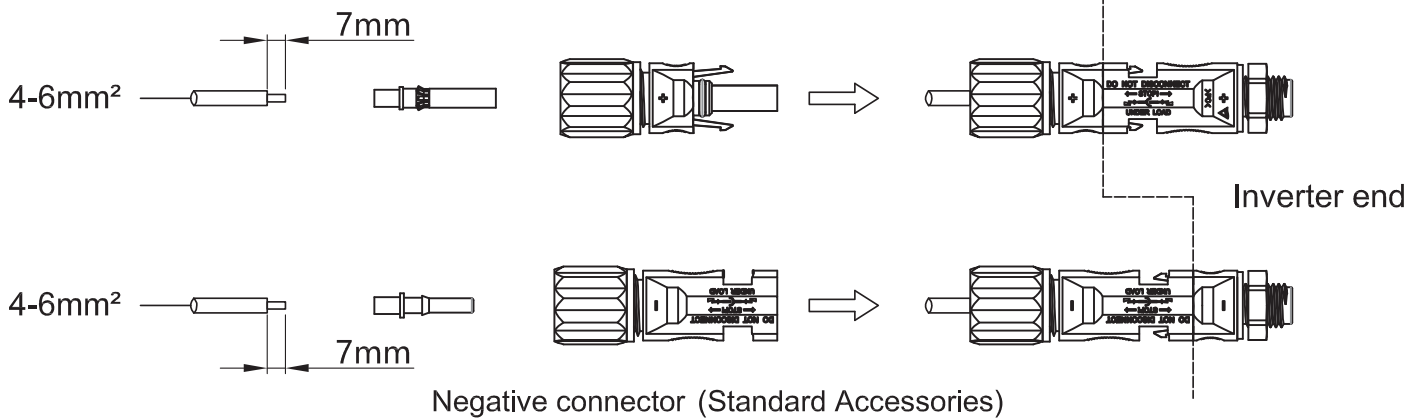
step 5



AC wiring and assembly

step 6

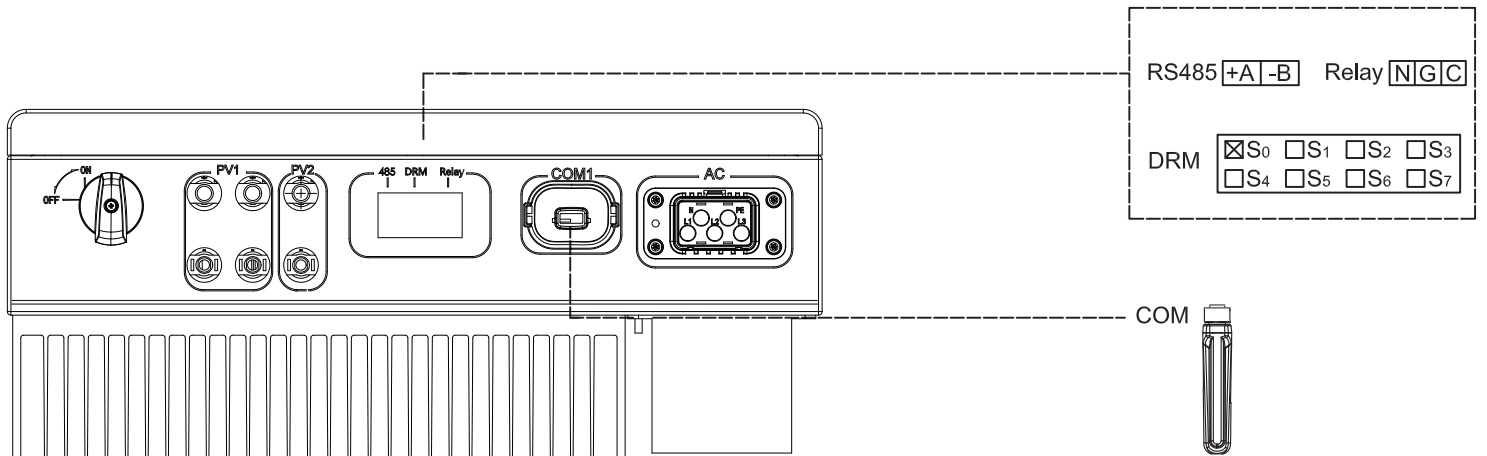
Positive junction (Standard Accessories)



Negative connector (Standard Accessories)

DC wiring and assembly

step 7



Installation of a rod data collector<Optional>