

# A100C

## Single Phase Meter

### End User's Guide





## **ABOUT THIS DOCUMENT**

This document is intended as a guide to help suppliers of Elster Metering Systems A100C Meters produce User Manuals for End Users.

Example text you may wish to use:-

## **ABOUT YOUR METER**

Your Elster A100C Meter has been chosen by your Service Provider to measure the amount of energy flowing through your installation. Some features described in this manual may not be exactly the same as your particular installation. For instance information viewed on the Liquid Crystal Display (LCD) may not be exactly the same as shown in this manual. Rest assured, the basic operation is exactly the same and you should have no difficulty in following the 'step by step' guides described in this manual.

## SAFETY



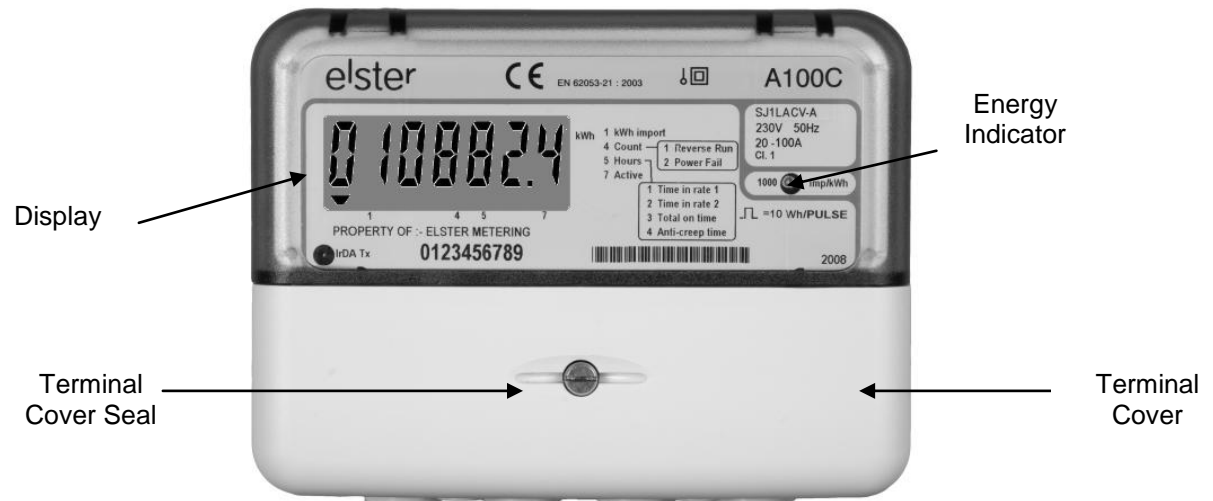
### SAFETY

- To prevent fire or shock hazard, never expose the meter to water
- Parts of the internal circuits of your meter are connected to phase voltages. These circuits are highly dangerous if they are touched in any way, and could result in an electric shock or fatality. For this reason the internal circuits of the meter are protected by a snap on cover which cannot be removed without breaking. The phase voltages are protected by a sealed terminal cover. You should **'never'** attempt to remove the Terminal Cover seal of the meter.

### Liquid Crystal Display

- Liquid crystals are toxic. If the display of your meter is damaged you should avoid contact with any liquid that may be seeping from it.
- If the liquid makes contact with your skin, wash the affected area thoroughly with running water and soap.
- If liquid crystals get into your eye, flush the affected eye with clean water for at least 15 minutes.
- If liquid crystal is swallowed, flush your mouth thoroughly with water, drink large quantities of water to induce vomiting.
- **Immediately Seek medical advice.**
- **Report the damage to your Service Provider**

## MAIN FEATURES OF YOUR A100C METER



## HOW TO CHECK YOUR METER IS WORKING

As your installation generates electricity a display (similar to the one shown opposite) will increment, allowing you to calculate exactly how much electricity you are generating over a given period of time.

When the Red kWh Energy Indicator is 'Flashing' the generating system is producing electricity. The faster it 'Flashes' the more electricity you are producing. If the indicator is permanently 'On', no electricity is being produced.

### Energy Generated Example:

Cumulative Energy Register Reading - 001647.8kW

Energy Reading After 24 Hours - 001651.9kW

Energy Produced Over 24 Hour Period - 4.1kW

Cumulative Energy Register



## YOUR METER DISPLAY

The meter will display the cumulative amount of energy produced by your generation installation.

On Power Up the "Test Display" may be shown.

**kWh:** Amount of energy being produced by your generating equipment over a period of one hour.

**21 TECHNICAL DATA****21.1 A100C Meter**

Current: IEC Ratings	20 - 100A, 10 - 100A, 5 - 100A [Ib-I <sub>max</sub> ]
MID/EN Rating	1-20 (100)A, 0.5 - 10 (100A), 0.25 - 5 (100)A [I <sub>min</sub> - I <sub>ref</sub> (I <sub>max</sub> )]
Frequency	50 Hz
Reference Voltage	220V - 240V
Voltage Operating range	±20%
Display	LCD (9.8 x 3.5) mm characters, high contrast, wide viewing angle)
Meter Constant (pulsing LED output)	1000 p/kWh
Accuracy Class kWh	Class 1 or Class 2 - EN 62053-21:2003



## About Elster Group

**Elster Group is the world's leading manufacturer and supplier of highly accurate, high quality, integrated metering and utilisation solutions to the gas, electricity and water industries.**

**In addition, through its subsidiary Ipsen International, it is the leading global manufacturer of high-level thermochemical treatment equipment.**

**The group has over 9,000 staff and operations in 38 countries, focused in North and South America, Europe and Asia. Elster's high quality products and systems reflect the wealth of knowledge and experience gained from over 170 years of dedication to measuring energy and scarce natural resources.**



The company's policy is one of continuous product improvement and the right is reserved to modify the specification contained herein without notice.

### Elster Metering Systems

**Tollgate Business Park  
Beaconside, Stafford  
Staffordshire ST16 3HS  
United Kingdom  
Tel. 44 (0) 1785 275200  
Web: [www.elstermetering.com](http://www.elstermetering.com)**