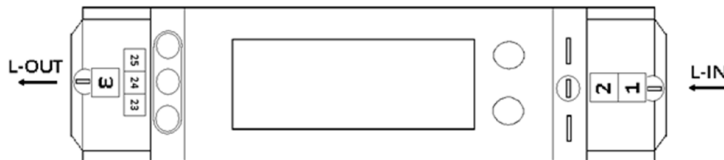
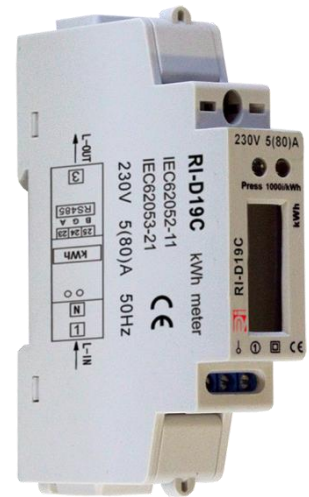


## RI-D19-80-C 230V 5/80A LCD

### Single Phase Energy Meter – 80A Direct With RS485 Output

<b>Current Range</b>	5/80A
<b>Voltage Range</b>	230V ±20%
<b>Impulse Constant (Red LED)</b>	1000 Imp/kWh
<b>Accuracy Class</b>	1
<b>Frequency</b>	50/60 Hz
<b>Display</b>	5+1=99999.9kWh Backlit LCD
<b>Temperature Range</b>	-20°C to 55°C
<b>Max Relative Humidity</b>	75% Average / Short time value 95%
<b>Standards</b>	EN62052-11 / EN62053-21
<b>Power Of Consumption</b>	≤0.4W, 8VA
<b>Communication</b>	RS485 - Modbus
<b>Baudrate</b>	1200, 2400, 4800, 9600 bps
<b>Max Terminal Wire mm<sup>2</sup></b>	10mm <sup>2</sup>



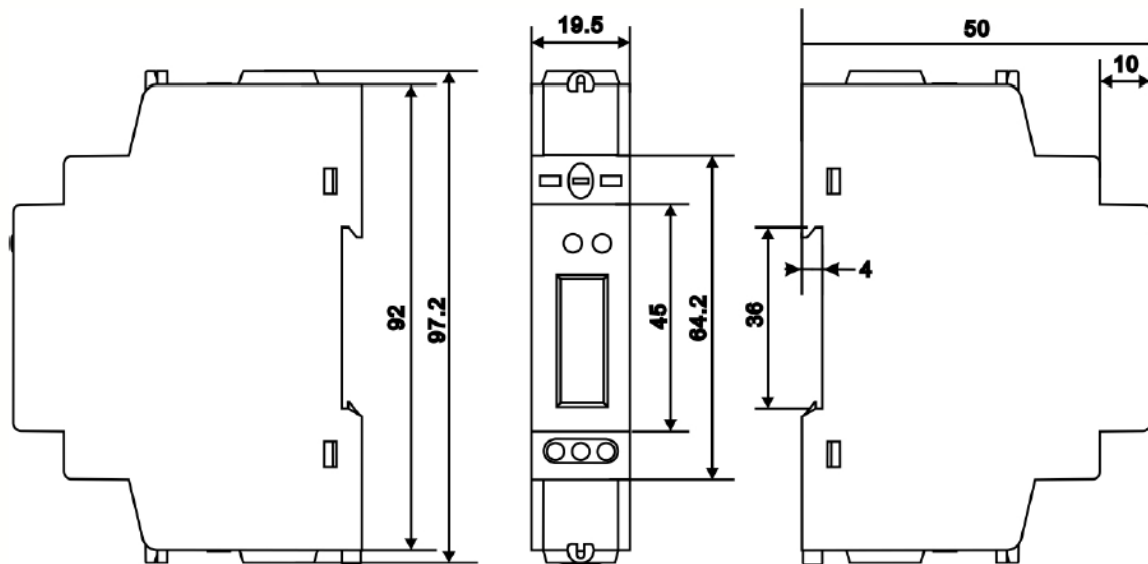
#### Connection Diagram

- 1 Live In      23 RS485 A
- 2 Neutral     25 RS485 B
- 3 Live Out

12345.0 kWh	Active Energy (KWh)
230.0 V	Voltage (V)
005.0 A	Current (A)
11.50 kW	Active Power (KW)
00.00 KVAR	Reactive Power (KVAr)
11.50 KVA	Apparent Power (KVA)
P 0.000	Power Factor (cos φ)

#### Meter Display Pages

Page will auto scroll every 5 seconds or can be manually accessed using front mounted button. Meter has a built in battery allowing display to be read with power off.



**Please Note**

Installation of this device may only be performed by qualified personnel.

**Technical support**

In case you have any questions about our product, please contact Rayleigh Instruments on 01268749300.

**Attention**

The Meter housing is sealed. Warranty is void if the seal is broken or removed